

INTERNATIONAL SCHOOL OF MANAGEMENT EXCELLENCE

Explore. Experience. Excel.



EXCELLENCE IN MANAGEMENT EDUCATION SINCE 2006

TABLE OF CONTENTS

01	Mission and Vision	2
	Chairman's Message	3
	Director's Message	4
	ISME's Transformational Leaders	5-6
	Dean's Message	7
	International Leadership Message	8
	HOD (PG) & PG Programs	9
	HOD(UG) & UG Programs	10
	HOD (Research) & Ph.D. Programs	11
	Other Programs	12
02	INTERNATIONAL CREDENTIALS	13-20
	Faculty with International Exposure	13-16
	International by Credentials and Culture	17
	What makes ISME International	18
	London School of Economics	19
	Learning in Singapore	20
03	CULTURE OF EXCELLENCE	21-28
	Excellence is a Way of Life at ISME	21
	Recognition for Excellence	22
	World-class Smart Campus	23-24
	Excelling in other Arenas of Life	25-28
04	CORPORATE CENTRIC	29-40
	Gearing up for the Corporate Environment	29-30
	Sector-wise Placements	31-32
	Industry Collaborations	33
	Experiential Learning	34
	Guest Speakers from the Corporates	35-36
	Recruiters Speak	37
	ISME Alumni working in Global companies	38-39
	Excellent Placements (2021-22)	40
05	LIFE AT ISME	41-45
	Students Outlook	41
	Hostel and Campus Facilities	42
	Student Diversity	43
	Bangalore: The Hub of Opportunities	44
	Admission Director's Message	45



CREATING PROFESSIONALS WITH AN INTERNATIONAL OUTLOOK

Our Mission

Our Mission is to transform every student to become a successful business professional with a global outlook through

- **Imparting quality education by outstanding business leaders and academicians**
- **Providing a culture of excellence, entrepreneurial thinking, social responsibility and industry alignment**

Our Vision

Our Vision is to be a Business School of international repute

“THERE SHOULD BE NO LIMITS TO WHAT ONE CAN ACHIEVE.”

ISME is an institution that provides a platform where there are no limits to what students can achieve. We make that happen through the three pillars of action: Providing a truly international experience, mirroring corporate work ethics, and working towards excellence in student-focussed experiential learning. With this, we see ourselves nurturing a generation of Managers and Entrepreneurs who are well-versed to think global.

**We invite you to
Explore, Experience and Excel.**



KG Garg

Chairman, NVT Group
BTech & MTech, IIT, Roorkee,
Bachelor's Degree from Ae.S.I., USA,
Graduate NDI from AFTC, USA

DIRECTOR'S MESSAGE

ISME's culture of excellence and international credentials allow students to gain an all-round learning experience.

INTERNATIONAL CREDENTIALS

Our faculty have international exposure either through work experience in MNCs or having studied or lived abroad.

1700+ alumni are working in MNC's in India, Canada, USA, Europe, UAE, Australia, Singapore.

CULTURE OF EXCELLENCE

ISME is a part of NVT Quality Certification, a quality certifying body for companies and academic institutions for ISO 9000. NVT Group also manages National Public School (NPS: Whitefield and East) the top schools in Bangalore.

ISME is ranked 34th All India by TOI, 2nd Top B-school of Super Excellence by CSR, 3rd top emerging BBA institute by TOI and Top-School for Academic Excellence by Bangalore Management Association 2022. ISME has been continuously recognised for best ROI since 2006.

ISME welcomes you to a future of learning that enables you to attain your maximum potential.

“AN ALL ROUND LEARNING EXPERIENCE, NOT JUST AN ACADEMIC DESTINATION.”

Nitin Garg

Director, ISME
BTech & MTech, IIT Bombay,
MBA, Carnegie Mellon University, USA
(Ph.D.), IIM Lucknow





ISME'S TRANSFORMATIONAL LEADERS

Governing Body

KG Garg
Founder & Chairman,
NVT Group

Nitin Garg
Director, ISME

Vivek Garg
Director, ISME

Tanuj Garg
Director, ISME
Member

Dr. Shampa Nandi
Principal, PG Programs
ISME Faculty Member

A N Chandramouli
Board Member- Starragheckert &
CEO ANCM- Management Consulting
Nominee from Industry

Dr. Anand K Joshi
Ex-Founder Vice Chancellor,
CMR University
Nominee from Education Industry

Shivakumar Venkateswaran
Former Chief Human Resources Officer
IIM (Bangalore)
Nominee from Education Industry

Dr. Rony G Kurien
Dean
Member Secretary

Accreditation Board Representatives

Er. Devadevan. V
Regional Officer & Asst. Director,
AICTE, AICTE Nominee

Dr. Sudhakara H
Member of the Syndicate
Bangalore University
Nominee for Governing Council

Dr. Ashok D Hanjagi
Professor at Bangalore University
Nominee for Governing Council

Dr. Aisha M Sheriff
Professor at University of Mysore
Governing Council Member

Prof. S J Manjunath
Professor at University
of Mysore

Advisory Body

Pallavi Jain
Director- Admissions, ISME

Pronob J Chetia
Director HR- Asia Pacific Region,
Volvo, Singapore

Dr. Giridhar J. Gyani
Director General at Association
of Healthcare- Providers (India)

N.K.Palta
CEO- Maini Global Aerospace

Dr. Ramesh G. Tagat
Fmr Prof. IIM (Bangalore),
Fmr Academic Mentor, ISME

Krishna Kumar
CEO- Simplilearn

S Devarajan
Director-Design, TVS
Motors



Curriculum Advisory Board (Academic)

Dr. Seema Gupta
Fmr Professor in Marketing,
IIM (Bangalore)

Dr. Shankarsan Basu
Professor in Finance,
IIM (Bangalore)

Dr. U Dinesh Kumar
Professor in Analytics,
IIM (Bangalore)

Dr. Ravi Kumar
Professor in HR,
IIM (Bangalore)

International Advisors

Arvind Pachhapur
MBA, Univ. of Minnesota,
USA

Rakesh Duggirala
MBA, University of Chicago,
USA

Prof. Senthil Veeraraghavan
Wharton School of Business,
USA

Cyrus Driver
MBA, IIM (Ahmedabad)

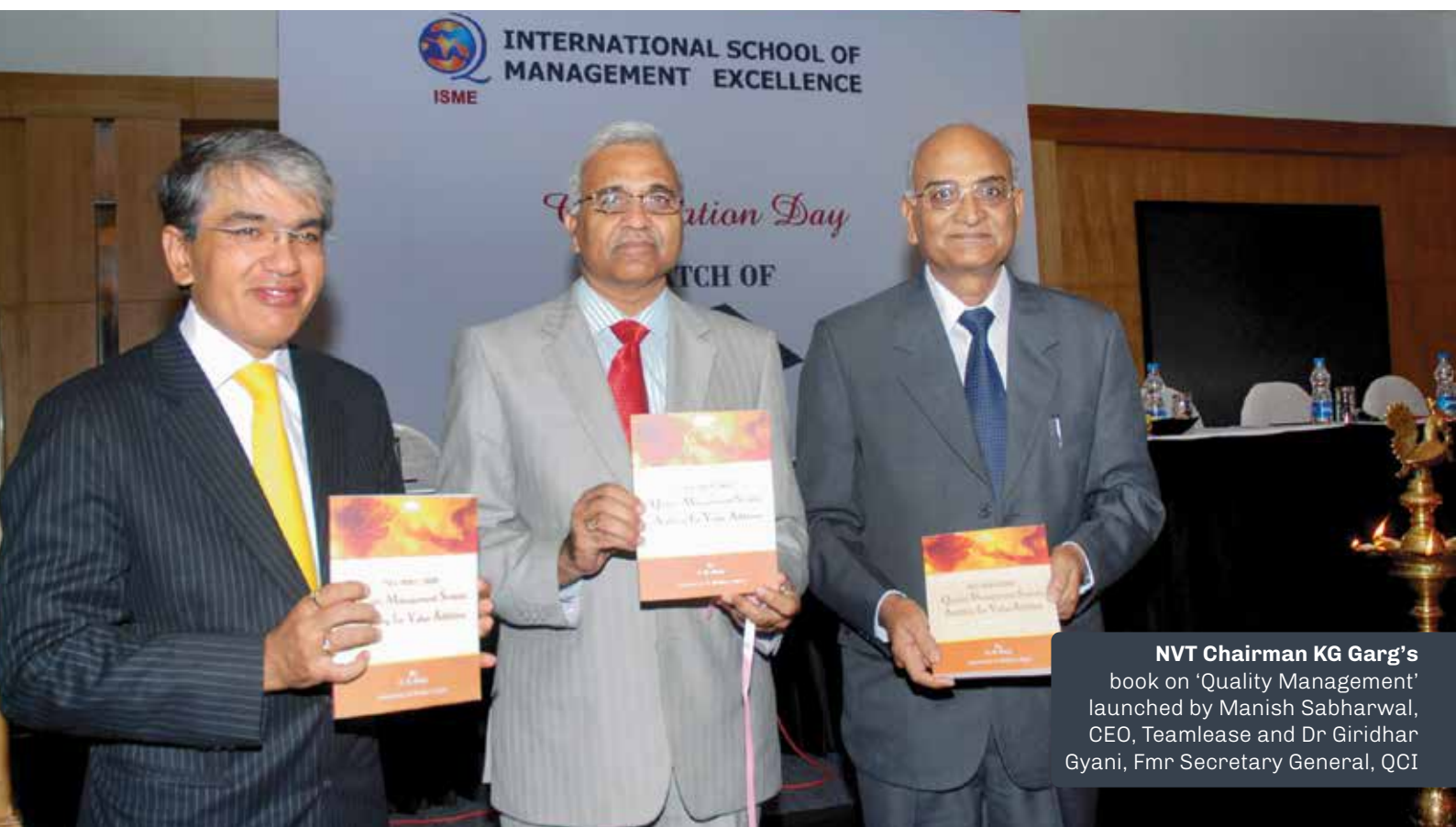
Sai Punjabi
MBA, MIT, USA

Sudhendu Saxena
MBA, IIM (Lucknow)

Rajesh G M Kumar
MBA, MIT,
USA

Samrat Basu
MBA, IIM
(Bangalore)

Tanuj Garg
MBA, Wharton Business School
MS, CMU



NVT Chairman KG Garg's
book on 'Quality Management'
launched by Manish Sabharwal,
CEO, Teamlease and Dr Giridhar
Gyani, Fmr Secretary General, QCI

“IT’S OUR CORPORATE AND STUDENT CENTRIC CULTURE THAT SETS US APART”

Dr. Rony G Kurien
Dean
BSc., MBA (Symbiosis),
Ph.D. (Anna University)

ISME is an institution with a strong focus on quality and excellence.

CORPORATE-CENTRIC

Our curriculum is dynamic and updated with inputs from the senior management in corporates and leading academicians of IIMs and other leading institutes to meet the requirements of the industry. We provide our students corporate exposure through industry visits and conduct over 50 guest lectures by eminent industry professionals each year.

Over 100 MNCs visit our campus for placements, ISME has also tied up with a number of top MNCs such as Grant Thornton, Ernst & Young, ABB, Quess Corp, Landmark Group etc. with a unique trajectory program, during which students are selected to study and work simultaneously and are assured of final placements with high salaries.

STUDENT-CENTRIC ENVIRONMENT OF FUN AND LEARNING

Our students get individual attention from our faculty through mentoring and coaching to help them excel in their course work and career choices.

Student Clubs and Labs complement "beyond the classroom" learning through training in soft skills, writing blogs, using gaming techniques, videos and case studies.

Students also get to lead by organizing intercollegiate fests, cultural events and other events like TEDx, Model UN among many others.

I would like to welcome you to join ISME and benefit from our outstanding faculty, staff, students and alumni in an inspiring and learning environment for your personal and professional development.

Vivek Garg

Director, ISME
MBA, Purdue University, USA

**A PRACTICAL WAY OF TEACHING WITH ACADEMIC RIGOUR**

It is generally said that management cannot be taught but learnt. The ISME programs impart education through a fine blend of theory and practice. Real-time situations created through management games, guest lectures, business excellence series and academic rigour through classroom sessions help students relate concepts to practice.

EDUCATION EXPERIENCE OF A LIFETIME

The entire faculty and team at ISME are committed to provide you with an educational experience of a lifetime. You will be equipped with the qualities necessary for future business leadership. Our team-based learning approach emphasizes an advanced understanding of strategy, leadership and management to ensure maximum returns on your educational investment.

Tanuj Garg

Director, ISME
MBA, Wharton School of Business,
MS, Carnegie Mellon University, USA



FREEDOM TO EXPLORE

We expose our students who hail from over 24 states across India and overseas to the dynamics of corporate environment and global business challenges through regular interaction with corporate senior management, experiential learning assignments, latest cases, library resources, varied pedagogies and training workshops which are delivered in our state-of-the-art campus.

ISME prides itself in providing personalised attention and we assure you of a very fruitful and enriching learning experience.

Dr. Shampa Nandi

Professor & Principal
(Post Graduate Program)
MSc., MBA, Ph.D. (IIT Dhanbad)
PGPDSBA, University of Texas, USA

ISME offers the following Post Graduate course

**Post Graduate Diploma in Management (AICTE Approved,
NBA Accredited, Equivalent to MBA by AIU)**

Major Specialization (Any one)	Minor Specialization (Any one)	Additional Minor Specialization (Optional)	Additional Certifications
1. Marketing 2. Finance 3. Human Resource 4. Business Analytics 5. Data Science & Analytics + Mu Sigma 6. International Accounting (US CPA)	1. Digital Marketing 2. FinTech 3. Information & Cyber Security 4. People Analytics	International Business, part of International Study Program, Singapore (Top University in Singapore)	1. Business Strategy Game 2. Advanced Excel / Python 3. Placement Oriented Value-Added Term 4. Design Thinking 5. KPMG 6 Sigma Certification

Prof. Rema Viswanathan
Principal (Under Graduate)
B.Tech, MBA, Cochin University;
(Ph.D.), Amrita University

SPARK YOUR IMAGINATION

Classes at ISME will spark your imagination. The Singapore Study Program, TedX, Academic Labs, Value Added Workshops, and Industry visits build the right attitude, functional and interpersonal skills which in turn enables the student to gain a global perspective.

ISME offers the following Under Graduate courses in management

Bachelor of Business Administration (Bangalore University) + International Study Program, Singapore

Major Specialization (Any one)	Minor Specialization (Any one)	Additional Certifications
1. Marketing 2. Finance 3. Human Resource	International Business (Top University in Singapore)	1. MS Office 2. Advanced Excel 3. Python & its application in HR, Marketing & Finance 4. Forensic Accounting & Tally 5. Data Visualization through Tableau 6. Digital Marketing & Google Analytics

Bachelor of Commerce (Bangalore University) + International Study Program, Singapore + ACCA/US CPA

Major Specialization (Any one)	Minor Specialization (Any one)	Additional Certifications
1. Accounting Taxation 2. Information Technology Finance 3. Banking & Insurance	1. International Business (Top University in Singapore) 2. International Accounting (ACCA, UK or US CPA)	1. MS Office 2. Advanced Excel 3. Python & its application in HR, Marketing & Finance 4. Forensic Accounting & Tally 5. Data Visualization through Tableau 6. Digital Marketing & Google Analytics



Dr. Nisha Mary Thomas
Co-ordinator (Research)
B.Com (Hons), PGDBM, Ph.D. (IIT Delhi)

EXCELLENCE IN RESEARCH

The objective of the research department is to strengthen research and innovation practises across specializations. Our institution is an approved Research Centre of University of Mysore for Ph.D. Program and Fellow Program in Management (FPM) by AICTE. Over 40 Scholars are pursuing their Ph.D./FPM program in ISME.

Internal research colloquiums are encouraged to promote and provide suggestions among the peer group. The faculty members write blogs on contemporary areas of management research.

The institution conducts an International conference every year with the theme “Contemporary issues in Management” to promote research. Many international speakers, thought leaders, research scholars and participants share their ideas. The Institution provides opportunity to young researchers to contribute research articles and publish it after peer review in the online journal “Xplore”. The centre promotes collaborative research, joint publications and takes up funded research projects.

ISME offers the following Doctoral Programs

Ph.D. in Management
University of Mysore

Fellow Program in Management
(FPM), AICTE

Rajendra Desai
 Head - External Programs
 B.Tech. (IIT Delhi), MS (Virginia Tech, USA)

EMPOWER YOUR CAREER AND BUSINESS

ISME conducts training for executives of private and public sector institutions to enhance careers and consulting to enable business growth. ISME has conducted various training programs for employees of companies like Indian Oil Corporation, A.O Smith, Oracle, Natural Remedies Pvt Ltd among others.

ISME offers the following External Programs

Corporate Training / Management Development Programs

- Communication for Business Effectiveness
- Finance for Decision Making
- Analytics for Business Insights
- Digital Transformation for Impact on Business Outcomes
- Innovation & Design Thinking for Business Growth
- Risk Management for Business Enterprise
- Quality and Six Sigma for Business Process Improvement

Management Development Programs

These programs are aimed at broadening the outlook and strengthening the skills of practising managers to prepare them for the challenging roles in the new economy driven by data and analytics.

Executive Post Graduate Programs

We offer longer term programs for working executives. Classes for these programs are conducted online over weekends with a tie-up with some of the best American institutes and content providers.

- 1.5 year weekend PGPM (Finance)
+ US CPA + Paid Internship
- 1 year weekend PGPM (Finance)
+ US CPA
- 1 year weekend PGPM (Business Analytics)
+ Mu Sigma

Corporate Consulting

ISME faculty regularly conducts consulting engagements in the area of Data Analytics & Digital Transformation to enhance the company's operations & profitability. Some of the recent engagements have been with Kesoram Industries, APS USA, Prismray Consulting.



LEARN FROM ACCOMPLISHED FACULTY WITH INTERNATIONAL QUALIFICATIONS AND WORK EXPERIENCE

Our full-time faculty have lived in countries like USA, Sweden, UK, China, Mexico, Singapore, Malaysia, UAE, Australia, France, Germany, Indonesia, and Bangladesh.

They come with rich experience in global multinationals like Cipla, GM, HSBC, Ocwen Financials, Deloitte Consulting, Booz Allen & Hamilton, Gallup Consulting, Capgemini, Marico, Australian Trade Commission, Accenture, Mu Sigma, Wipro, Bank of America, HDFC Bank, ICICI Bank, Oracle Corporation, Logica Infotech, Flipkart, Samsung among others.

ISME's culture of open-door policy and individualised attention with faculty to student ratio of 1:12 helps in the transformation of the students.

MARKETING & STRATEGY



ANSHU SHARMA
B.Tech (IIT Kharagpur),
M.Tech (IIT Kharagpur),
PGPM (ISB Hyderabad)



GOPI G
BBA (Madurai Kamaraj
University), MBA



HARITHA S
(B.Tech, MBA
(NITK, Surathkal)
(Ph.D.)



NITIN GARG
Director, ISME
B.Tech & M.Tech,
IIT Bombay,
MBA, CMU, USA,
(Ph.D.) IIM (Lucknow)



REMA VISWANATHAN
B.Tech, MBA, Cochin University,
(Ph.D.), Amrita University



Dr. RONY G KURIEN
BSc., MBA (Symbiosis)
Ph.D.(Anna University)



Dr. SHAMPA NANDI
MSc, MBA,
Ph.D., IIT (Dhanbad)
PGPDSBA
University of Texas



Dr. SHASHIKALA PATIL
BA (English), MA (English)
MBA Marketing, Ph.D.



Dr. SHYAM PRASAD
MBA, Ph.D.



VIVEK GARG
B.E, MBA,
Purdue University, USA



ARVIND SRINIVASAN
MBA BIM- Trichy
B.Tech- NIT (Jalandhar)



DIVIEN PREMNATH
B.Com, P.G.D.B.A.
(Marketing & HRD)



JATINDER MOHAN
MBA
(Bangalore University)



MANOHAR D. RAO
B.Tech (IIT Madras),
PGDM IIM (Ahmedabad)



RAGHURAMAN
B.E, PGDM,
IIM (Bangalore)

FINANCE & ECONOMICS



JACOB CHANDY
B.E, PGDM,
IIM (Bangalore)



Dr. NISHA MARY THOMAS
B.Com (Hons), PGDBM,
IILM, Ph.D., IIT (Delhi)



Dr. RATCHANA R
B.Com (Hons), M.Com (CA),
M Phil (Commerce), Ph.D.



P.V. RAJARAM SASTRY
B.Com, PGDBM
PGCHRM (XLRI)



SHASHI REKHA B V
B.Com, M.Com & MBA
M. Phil, (Ph.D.)



SUDINDRA V. R
B.Com, MBA (Finance),
(Ph.D.)



TANUJ GARG
MS (Carnegie Mellon
University), MBA
(Wharton Business School, USA)



VIKKU AGRAWAL
B.Com (Hons),
Master's in Corporate
Management



INDRANIL SAHA
B.E, PGDM,
IIM (Calcutta)



KIRAN KUMAR. K V
M.Com, PGDBA, (Ph.D.)
(Finance & Marketing)



PURNIMA GUPTA
BSc.(Hons), MBA (Finance)
(Ph.D.) University of Mysore



RISHIRAJ DASGUPTA
B.E, PGDM,
IIM (Calcutta)



Dr. SUDHINDRA BHAT
M.Phil, MBA,
Ph.D. (Finance)

HUMAN RESOURCE MANAGEMENT



Dr. ANNAPOORNA SWAMY
BA, MA (Economics), MBA,
Ph.D. (University of Mysore)



PALLAVI JAIN
PGDM, PG in HRM
(Wharton Business
School, USA)



SHURLLY TIWARI
MPM, PGDBM,
(Ph.D.) Jain University



Dr. SINDHU SHANTHA NAIR
BSc. (Maths), M.Phil,
Ph.D., MBA, MSc
Fellowship, HRM



SRIRAM PRABHAKAR
B.E, PGDBA, (Ph.D.)
University of Mysore



H.S. MISHRA
MSc, LLB,
Diploma in Management
(MDI Gurgaon)



JOY VARGHESE
BSc, MSW, MBA,
University of Ljubljana
(Ph.D.) University of Mysore



**KIRAN STEVEN
BA, MSW (HR)**



Dr. NILANJANA BHADURI
MA, Ph.D. (IISc)



PREEJA SREEDHAR
PGDMCJ, PGHRM



SURESH MENON
BSc, LLB, PGDPM

BUSINESS ANALYTICS & IT



Dr. SHAMPA NANDI
MSc, MBA, Ph.D.,
IIT (Dhanbad) PGPDSSBA,
University of Texas



Dr. SHYAM PRASAD
MBA, Ph.D.



STUTI AGARWAL
M.Sc., MBA,
University of Calcutta



Dr. ANISH ROY CHOUDHARY
B.Tech (IIT Madras),
PGDM IIM (Ahmedabad)
Ph.D. (IISc, Bangalore)



**HIRANMAYI
UPADHYAYA**
B.E, VTU (Belgaum)



KUHU BOSE
B.Tech, PGDELT
(Bangalore University)



SHALINEE SUMAN
B.Tech (IT), MBA



Dr. MANJUNATH B R
MBA, M.Com,
CFA, EPAF, Ph.D.
UGC NET



MANOHAR D. RAO
B.Tech (IIT Madras),
PGDM IIM (Ahmedabad)



NIKHIL GUPTA
B.Tech (IIT-Varanasi)
MBA (MIT-US)

OPERATIONS & QUALITY MANAGEMENT



A.N.CHANDRAMOULI
B.E (NIT),
PGPM (IIM Calcutta)



RAJENDRA DESAI
B.Tech,
MS (Virginia Tech, USA)



RISHIRAJ DASGUPTA
B.E, PGDM,
IIM (Calcutta)



VISWANATHAN HARIHARAN
M.Tech
(IIT Bombay)



Dr. PRATIMA NARAYAN
LLB, B.A.L, MBL, Ph.D.

MANAGERIAL SKILLS & ENTREPRENEURSHIP



KRISHNAN R
PGPM, LIII (GEN)



MINI K L PILLAI
MA, M.Phil



Dr. RONY G KURIEN
BSc., MBA (Symbiosis)
Ph.D.(Anna University)



SHRUTHI NANJAPPA
BA, MA, M.Phil
(JNU, New Delhi)



JAICY GEORGE
BA (IR & PM)
MSW (MG University)



PREEJA SREEDHAR
PGDMCJ, PGHRM



RAMESH RANJAN
BA (English)
Masters in HR (MSSW)
PGDBA



RITU PRASAD
BA, MSc (Applied Psychology)
PGDM



SHIKHA NAG
MBA (Marketing & Finance)
[BIMTECH]



SURAJIT BANERJEE
PGDM- Marketing (IMT)
Certified DISC Practitioner

LANGUAGE



LIVEA PAUL THEKKEKARA
MA, M.Phil, (Ph.D.)
Christ University



RAMESH C P
BA, MA, B.Ed



SAVITHA KUMARI B
BA [Hindi], MA,
Sahithya Rathna, B.Ed

INTERNATIONAL BY CREDENTIALS AND CULTURE

A group with global operations

ISME's parent organization, NVT Quality Certification (NVT QC) is an ISO accreditation body that has certified companies for over 25 years across 36 countries. NVT QC helps in bringing a culture of best practices and the philosophy of quality into ISME. NVT Group also operates National Public School (NPS), Whitefield and East, India's leading CBSE schools with over 3500 students.

International background of leadership

ISME has been founded by alumni from leading US institutions like Carnegie Mellon University, Purdue and Wharton Business School, USA.

International academic partnerships

ISME has various International tie-ups with top universities around the world in countries like Singapore, Australia, USA, Canada, Germany, France for study trips, faculty exchange, pathway for undergraduate programs and joint research.

Faculty with international exposure

All faculty at ISME bring with them an international exposure, which they have gained either by having studied abroad in leading universities or have worked in MNCs.

Global inputs

Our students are a part of courses designed and offered at some of the top business schools leading to additional certifications like Business Strategy Game from Professor Arthur Thompson, University of Alabama, USA and Thunderbird School of Global Management, Arizona, USA.

India Business Study Program

ISME conducts India Business Study Program, which helps international students get the exposure to business and culture opportunities in India.



WHAT MAKES ISME INTERNATIONAL



Academic Collaborations



University of New Castle
Australia



Carleton University
Canada



A unit of the Arizona State University Knowledge Enterprise
Thunderbird School of
Global Management, Arizona



UNCP, USA



FHWS, Germany



National Entrepreneurship
Network



Singapore
Institute of Management



Management Development
Institute of Singapore



Association of
Indian Management Schools



All India Management
Association

SUMMER PROGRAM AT THE LONDON SCHOOL OF ECONOMICS, UK

Founded in 1895, LSE is a leading specialist social science institution in the world. Its teaching and research is recognised worldwide as a benchmark of quality.

Study with students from over 90 countries, stay on LSE campus housing and pursue a 3-week certification program in LSE.

Since London is one of the most culturally developed and exciting cities in the world, students have a lot to learn from its diversity.

The learning at London School of Economics has helped me gain insights on how this generation prepares for international business roles.

Angad Soni,
PGDM 2015-17, Northern Trust



EXPERIENTIAL LEARNING PROGRAM SINGAPORE

PGDM, BBA and B Com students visit Singapore as a part of their experiential learning. They are housed in the hostels of Singapore Institute of Management or Management Development Institute, Singapore.

Students visit top industries, attend workshops, and get certifications. Student get an opportunity to explore Singapore and learn the nuances of International Business.

As Singapore is a melting pot of several cultures, the students get a chance to understand and get familiar with these aspects. They also interact with Academicians and Heads of various organizations and learn from them.



WHERE **EXCELLENCE** IS A WAY OF LIFE

ISME is a part of NVT Group which is a certifier of quality for companies and Institutes for ISO 9000, thus excellence runs in our DNA.

Rankings

ISME is a recipient of many awards for Excellence in Education and Best ROI since 2006.

Innovative teaching methodology

Teaching at ISME through experiential learning, case studies and practical projects, provide a new facet to understanding businesses.

Blended learning

ISME encourages tools like eBooks, e-Journals and ISME faculty videos on the ISME YouTube Channels, which lead to learning outside the classroom.

Placement-centric coursework

ISME has pioneered the concept of Value-Added Term (VAT) that enables students to integrate their learning so they are geared for opportunities in the corporate world.

Research focus

ISME faculty work on various emerging areas of management and participate in international conferences, the outcome of which is incorporated into the curriculum.

Insights from industry

ISME hosts 50+ guest speakers and practitioners from the industry every year. There is a strong focus on creating awareness amongst students about current business events through courses and by being a part of panel discussions.





Ranked as a Top B School

- Times of India (3rd Best Emerging BBA Institute All India, 2022)
- Competition Success Review (2nd Top B-School of Super Excellence, 2022)
- Bangalore Management Association (Top B-School for Academic Excellence, 2022)
- Times of India (34th All India, 2021)
- Recipient of many awards of Excellence in Education & Best ROI since 2006



INTEGRATED WORLD-CLASS SMART CAMPUS TO ENHANCE THE LEARNING EXPERIENCE

ISME has a state-of-the-art campus and a feel-at-home boarding facility.

Classrooms

ISME has well designed classrooms equipped with latest audio and video equipment

Knowledge Center

The college has an extensive collection of books, magazines, and journals on Management.

The library subscribes to many national and international journals and periodicals for students to enhance their learning.

ISME library also has access to IIM Bangalore library, British Council of India online library and access to databases like EBSCO, and JSTOR.

State of the Art Auditorium

The college hosts major educational conferences, cultural programs at its state of the art auditorium having latest acoustics, audio & video equipments.



Computer Lab

The computer lab is equipped with the latest computers and software to support the academic activities of students. The campus is Wi-Fi-enabled.

ISME is a venue for CAT, XAT, MAT, CLAT, SNAP, UGAT & IPMAT

The advanced computing facilities makes ISME an ideal venue for all major entrance exams.



The institute is very good and is located in a very peaceful area of Bangalore and the campus has a beautiful infrastructure with highly equipped Computer Lab, Classrooms & Auditorium. We even have an open air amphitheatre to spend quality time together.

Vikas Chaturvedi
BBA 2022



LEARNING TO EXCEL IN OTHER ARENAS OF LIFE

There's life beyond academics, and ISME is just the kind of place to hone skills and participate in events outside of academic programs in various co-curricular and extra-curricular activities.

Student Activity Centre

Student Activity Centre conducts social events like Teachers' Day, Diwali celebrations, Fresher's Day, Christmas and also activities like supporting old age homes. Such participation helps in improving leadership skills, emotional quotient and empathy within the individual. The centre oversees the activities of the different clubs.



Communication Club

Speech Weavers – The Communication Club has been formed to weave the speaking abilities among our students making them orators for life. The objectives of Communication Club are to understand Public Speaking skills, analyse the inhibiting factors and apply the 7C's of Communication.

Entrepreneurship Club

The Entrepreneurship Club organizes guest lectures, visits to industries, business workshops, case study competitions and Business plan workshop's & competitions. These activities enhance the knowledge, awareness and the overall personality of the managers-to-be for the real industry environment.



Literary Club

The Literary Club of ISME nurtures and promotes intellectual growth through creative activities like writing, collage-making, debating, annual magazine & Library events. This club manages the ISME blog and the Instagram community of ISME that captures the plethora of activities conducted on the campus, giving students a platform to showcase their social skills, creativity, talent, and leadership qualities.



Academic Labs

The Academic Labs for different specialisations organizes guest lectures, visits to industries, business workshops, case study competitions and personality development workshops.



CSR Club

The CSR club aims to sensitize the students about their duties towards the community they live in. The club works towards ensuring an impactful transformation in the targeted area of social support and in developing a sense of empathy and responsibility towards the underprivileged.

Social Activities Centre

This centre along with other clubs also organizes ISME's Intercollegiate cultural extravaganza known as Busibuzz, Youthkarsh and programs such as TedX every year inviting eminent speakers from various facets. Such programs help in enhancing communication, leadership and organizational skills.

ISME.FIT

The main aim of ISME.FIT is to make its students fit, flexible and strong. ISME is concerned about the health and fitness of its students, and believes in making a better and healthy society for tomorrow. ISME.FIT serves as a platform for the students to develop themselves physically and mentally. The focus of the program is to develop flexibility, strength and endurance among its students.



GEARING UP FOR THE CORPORATE ENVIRONMENT

The focus at ISME is to prepare students for the corporate world. With corporate at the core of our teaching, there are many activities which are designed to prepare future business leaders.

Value Added Term (VAT)

ISME offers an additional and a unique mini semester focused on preparing students for the corporate world. These trainings are beyond the regular academic program which help in transforming students for a smoother transition into the corporate world.

The unique 4-week training program is aimed at preparing students for the Placement Season. The courses are:

- 1** Group Discussions and Mock Interviews
- 2** Management Techniques Review
- 3** Global Business Strategy Game by Prof. Arthur Thompson, University of Alabama, USA
- 4** Advanced Excel Workshops
- 5** Negotiation and Presentation Skills

Open corporate culture

ISME encourages and practices an open international corporate culture. This entails an open-door transparent policy with senior faculty members being accessible to the students.

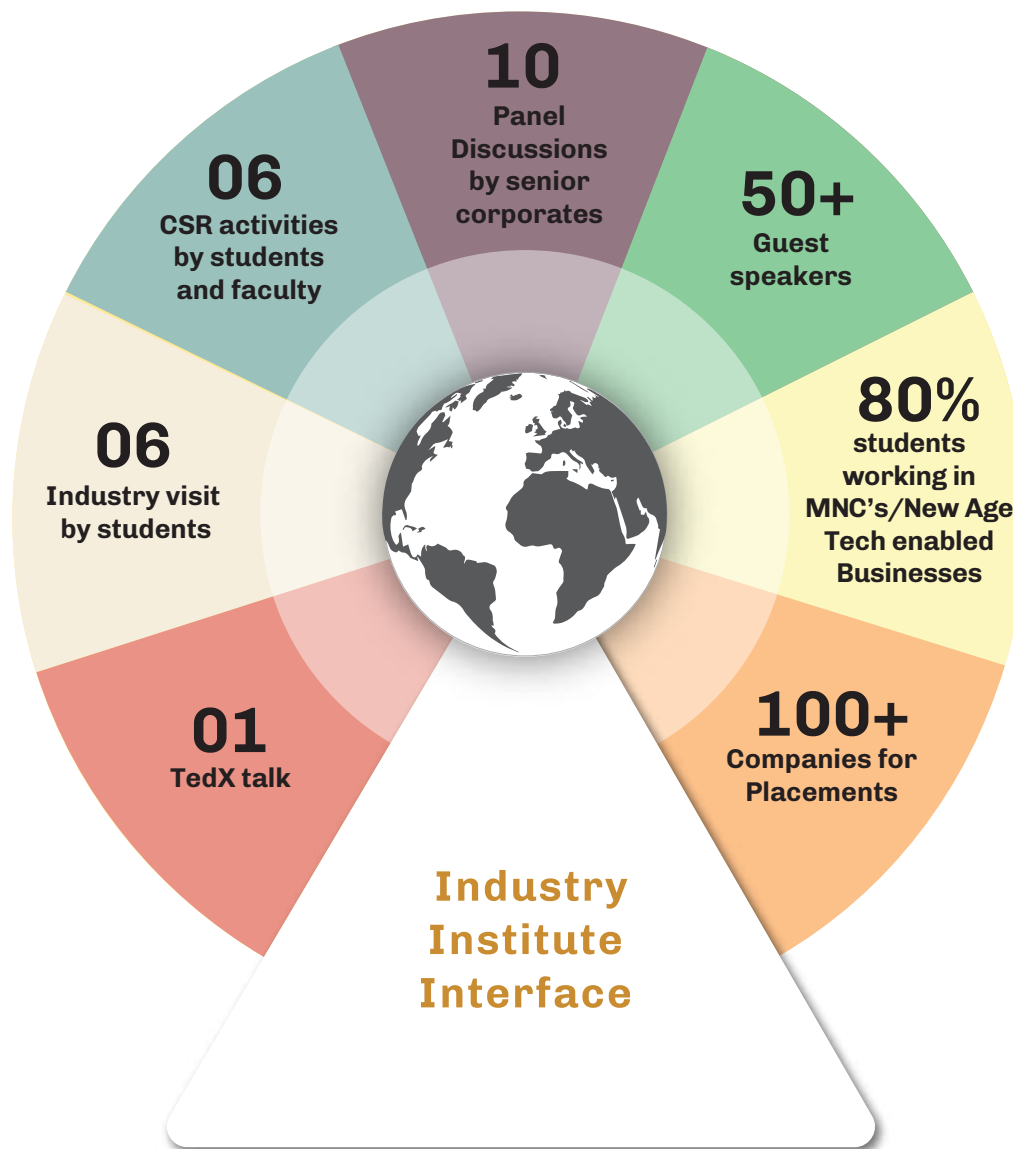
Corporate-like discipline

To get students accustomed for corporate life, the college follows a calendar that mirrors a corporate calendar in terms of rigour, holidays and on-time deliverables.



At ISME, amidst the beautiful green campus, accompanied by the most experienced and supportive faculty, I have been moulded into a confident corporate professional. My decision to join ISME has helped me experience the diverse cultures and also to discover my true potential. It has been an enriching journey at ISME with the opportunity to be a part of various student led events and activities that evolved me into a better leader.

Sirichandana VV
PGDM 2020-22, Ernst & Young



Internship handholding

During their internship with an organization, every student has a faculty partner who is associated with the manager of the company. This faculty member helps the student gain maximum out of the internship by being an interface between the company's manager and the student.

Managerial Skill Development

An important part of business success is soft skills. At ISME, students are groomed in time management, leadership, creativity, negotiation skills, business etiquette, etc., as a part of the Managerial Skills Development program.

Industry-focused curriculum

ISME's course content is regularly updated in consultation with corporates to keep students in tune with evolving practices at workplace across disciplines.

Industry interface and visits

Panel discussions and talks from the corporate leaders are organized regularly. To give students an insight into corporate culture and how organizations and industries function, industry visits are organized regularly.

OPENING THE DOOR TO A FUTURE OF OPPORTUNITIES

ISME graduates set foot in various domains as soon they pass out of their program, finding their niche in various sectors. Every year there are over 100 companies visiting ISME to recruit students at various organizational levels. Here's a glimpse of the various sectors and brands where ISME alumni are placed for various job profiles in Marketing , Finance , HR & Analytics.

Financial Services/Other Services



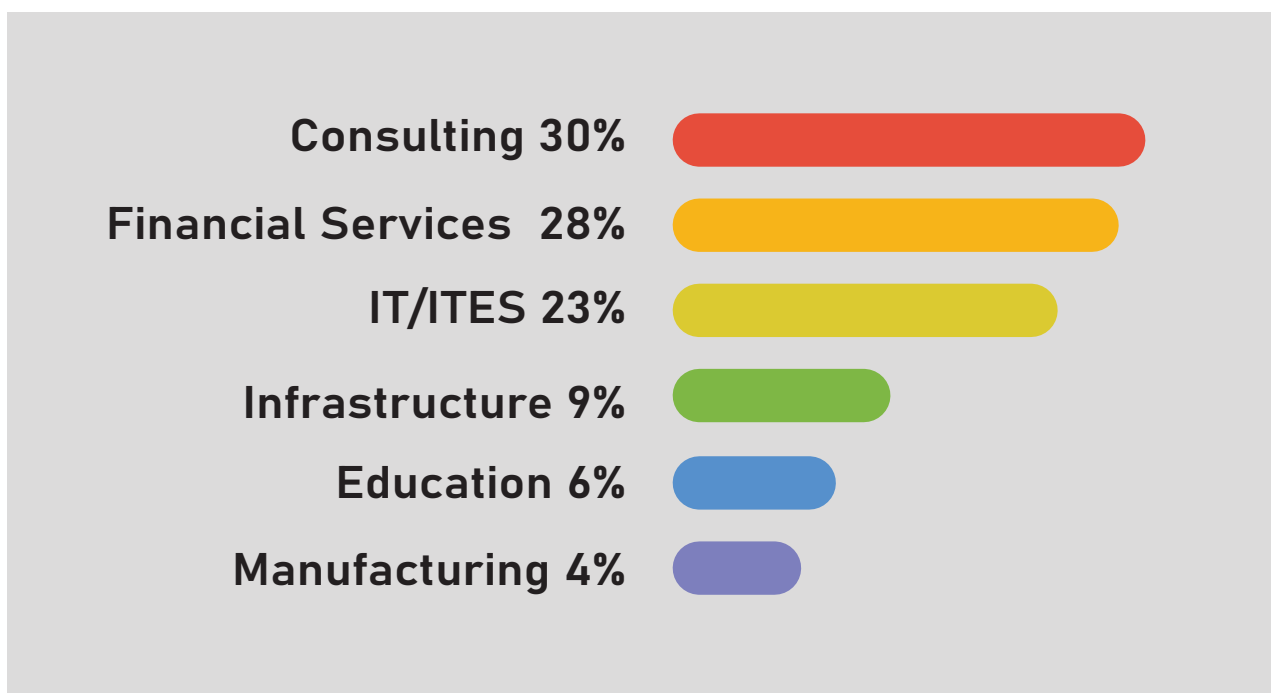
Consulting



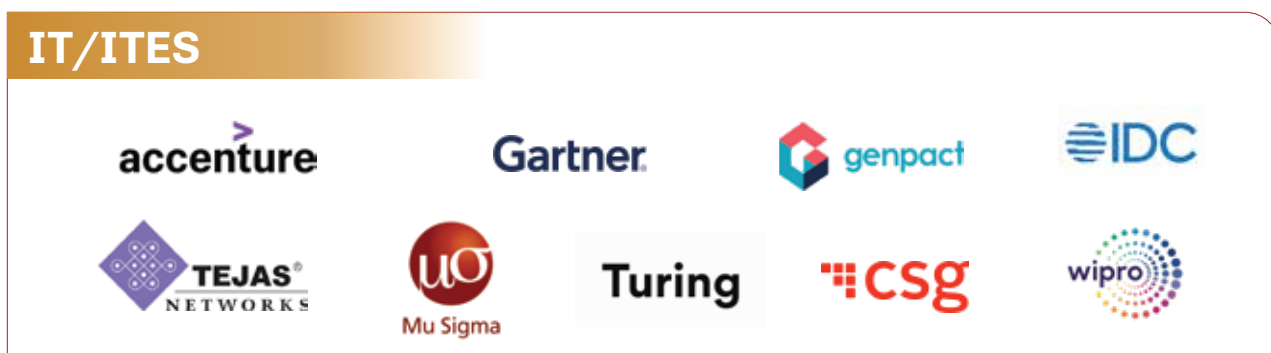
TEB



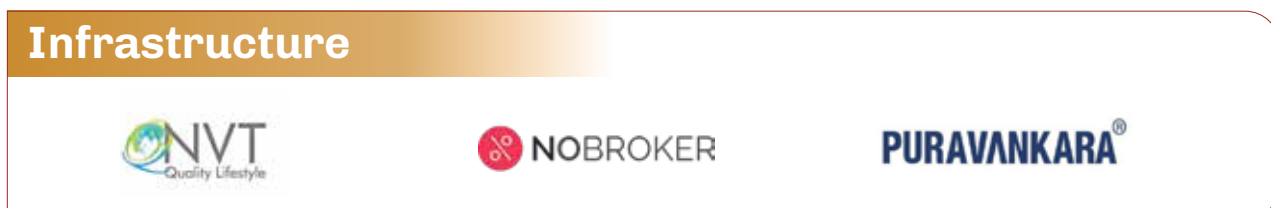
SECTOR-WISE DISTRIBUTION OF STUDENT PLACEMENTS



IT/ITES



Infrastructure









Manufacturing



And many more in every sector.

PROFESSIONAL & INDUSTRY BODIES COLLABORATIONS:

 <p>Bangalore Chamber of Industries and Commerce</p>	 <p>Bangalore Management Association</p>	 <p>Confederation of Indian Industry</p>
 <p>National Human Resource Development</p>	 <p>Indian Institute of Materials Management (IIMM)</p>	 <p>Federation of Karnataka Chambers of Commerce and Industry</p>

EXPERIENTIAL LEARNING ALL THE WAY

Summer internships

ISME's Career Opportunity Center helps place first year PG and third year UG students as summer interns for 8 to 10 weeks with various corporates and industries. This helps students get their industry experience and enables them to decide on their specialization.

Mentoring and counselling

The Career Opportunity Center organizes workshops on resume writing, cover letters, interview skills, job search skills, networking and counselling sessions to help prepare students to develop effective interpersonal and presentation skills.

Recruiting activities

The Center organizes on-campus and off-campus recruitment events where companies are invited to participate, share and discuss career opportunities in their organization. Every year there are over 100 companies visiting ISME to recruit students at various organisational levels. ISME has achieved a 100% placement record since its inception.

LEARNING ON THE JOB IS LEARNING FOR THE JOB

PGDM- Data Science & Analytics + Mu Sigma

Get employed on Day 1 of joining ISME at Mu Sigma

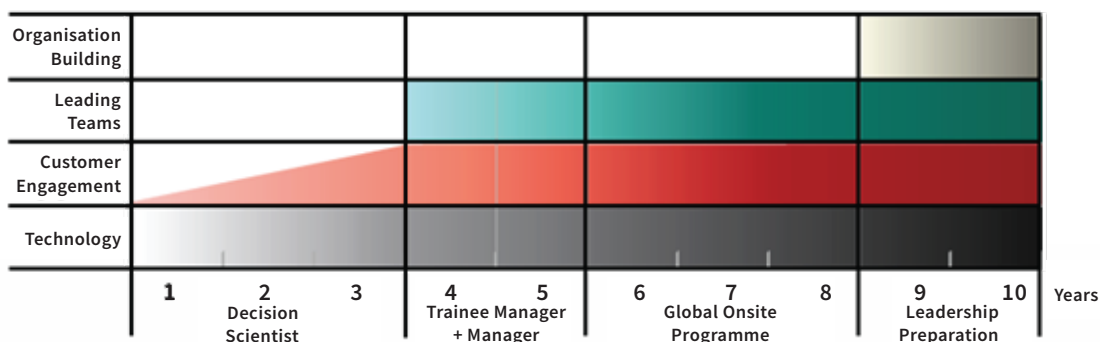


The PGDM- Data Science & Analytics at ISME is a collaborative program with Mu Sigma, the world's leading global analytics company. With a balanced combination of in-class room learning and onsite training at Mu Sigma Bangalore campus, the course will enable on-the-job learning through guided mentorship and hands on experience in live projects.

The highlights of this program are:

- Get placed at Mu Sigma on the very first day of the PGDM program with a high salary after completing PGDM. Earn about Rs. 30 lakhs in 3 years.
- Save two years of your career and directly get promoted to 3rd Year in Mu Sigma

10 Years Career Journey at Mu Sigma



ISME Internship Trajectory Program

Get employed by second year of ISME in companies like EY, Grant Thornton, ABB, OnMobile, Quess Corp and other top MNC's

ISME has collaborative arrangements with top MNCs for internship trajectory program. The program enables students to undergo a six months' internship followed by a job offer by December, six months before graduation.



CORPORATE LEADERS@ISME



Krish Shankar
(Group Head- Human Resources at Infosys)
Visited ISME, spoke at HR Colloquium
Autographed his book Catalyse : Power up your people

ISME has over 50 industry leaders visiting annually, to enrich students with insights and share their experiences and best practices.



CORPORATE LEADERS@ISME

ISME has over 50 industry leaders visiting annually, to enrich students with insights and share their experiences and best practices.



Avinav Trigunait
Director, Strategic Initiatives
Singtel, Singapore

Topic: "Career Path and Experiences of Self & Practical tips to achieve success"



Preeja Sreedhar
Leadership Coach
Mu Sigma

Topic: "Workshop on Self-development- Parichay"



Dr. Mathew Manimala
Former Professor of Organisational Behaviour
IIM Bangalore

Topic: "Education, learning and career competencies"



Dr. Jayaprakash Sugavanam
Co-Founder & Data scientist
Nanobi Analytics

Topic: "ETL- an Industry Perspective + Internship Opportunities"



Ms. Anjana KR
Head - Talent Acquisition for BFSI,
Tata Consultancy Services

Topic: Career opportunities in the VUCA world and Happiness at work



Kashyap Dalal
Co-founder & Chief Business Officer
Simplilearn

Topic: "Journey of Simplilearn- complete cycle from ideation to funding to current milestones of success"



Mr. Manoj Goyal
Director, Research & Advisory
Gartner

Topic: "How Secondary Research works in an Industry Environment"



Sanjay Agarwal
Program Director
IBM

Topic: "Quantitative Techniques"



Prof. Gad Ravid
Founder, VP- Academic Affairs, UIBE Israel

Topic: 'Management of Innovation Challenges in the New World of Work'



Abhineet Joshi
AVP
EY

Topic: "Advanced Financial Management"



Mr. Pronob Chetia
Director HR -APAC
Volvo Group

Topic: New Skills in Today's World



Samir Jayaswal
Director, Co-Founder & CEO
Finbigo.com

Topic: "Career Opportunities in Fintech & The Future of Fintech"



Shikha Nag
Founder & Director
Indian Academy of Public Speaking

Topic: "Showcasing the Best of YOU" Self-Development Workshop



Dr. Sankarshan Basu
Professor of Finance & Accounting
IIM Bangalore

Topic: "Indian Business & Economic Landscape Today and Tomorrow"



Tarun Goyal
Founder & CEO
Simplotel

Topic: "Entrepreneurial Journey"



Vishvini Kashyap
Manager
Grant Thornton's KCC

Topic: The Industry perspectives of IFRS in India'



Dr. Seema Gupta
Former Professor of Marketing
IIM Bangalore

Topic: "Indian Business & Economic Landscape Today and Tomorrow"



Bharathy Jayaprakash
Chief Financial Officer
EsyaSoft Technologies Pvt Ltd

Topic: "Corporate and Financial Ethics"



Prof. Joy Varghese
Former Director HR
National Aluminium Company Ltd.

Topic: "MIR"



Prakash Wakankar
CEO 2W Businesses &
Chief of International Operations
Mahindra & Mahindra Limited

Topic: "Initiatives to fight against the Pandemic"



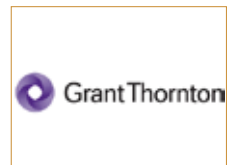
Mr. Rajesh Rajendran
Data science Manager
Infosys

Topic: Retail Analytics / RFM

RECRUITERS SPEAK

TALENT THAT'S WIDELY ACKNOWLEDGED AND VALUED.

My association with ISME has been a pleasing experience. I was quite enthralled with the quality and efforts of its corporate resource center and a highly motivated placement cell, which ensures each and every student gets an opportunity to get a good job and kick-start their career. The college puts genuine efforts into nurturing each student, preparing them both mentally and physically to take on the challenges of the corporate sector. We are incredibly happy and thankful to ISME for the continued association with Grant Thornton INDUS.



- Ankur Garg- Associate Director- Grant Thornton

"We are associated with ISME for the last 3 years. We have recruited students for Internship and for full time job positions. The students are hardworking and have exhibited utmost professionalism. We are impressed with the knowledge and skills the students possess. We congratulate ISME for imparting quality education and look forward to long term association"



- Ravi Kumar- Head HR- Feedback Consulting

"Mu Sigma has a truly fruitful partnership with ISME – we have recruited fantastic talent from ISME who continue to grow in our organization and add tremendous value to our DNA. The work ethic, cultural DNA, quality of education delivered at ISME is helping mould students into leaders, and we look forward to a sustainable partnership with ISME"



- Hashir Sitheekh- India Leadership-Founder & CEO's office, MuSigma

"A key ingredient of a knowledge worker is the ability to think on their feet and the 'fire in their belly' that will keep them driven. The students of ISME have shown that these qualities are part of their working culture both as student (during internship) and as a corporate citizen at IDC."



- Venu Reddy- General Manager- International Data Corporation

"Our relationship with ISME is growing stronger as we pass each year. We appreciate the hard work the institution puts in towards grooming future business leaders who are passionate, competent and ready to take on any challenge ahead. All students have exhibited tremendous commitment to work and have excelled in their portfolios in a very short span of time. We would definitely like to increase our engagement with ISME in the coming years too."



- Suveen S- Deputy General Manager (HR)- NxtGen Datacenter and Cloud Technologies Pvt Ltd

ON A FUTURE THAT SPEAKS OF THEIR LEARNING AND SUCCESS

Students of ISME have created an identity of success and triumph for themselves across different levels, at some of the best companies. Here's what some of our alumni have to say about their learning at ISME.

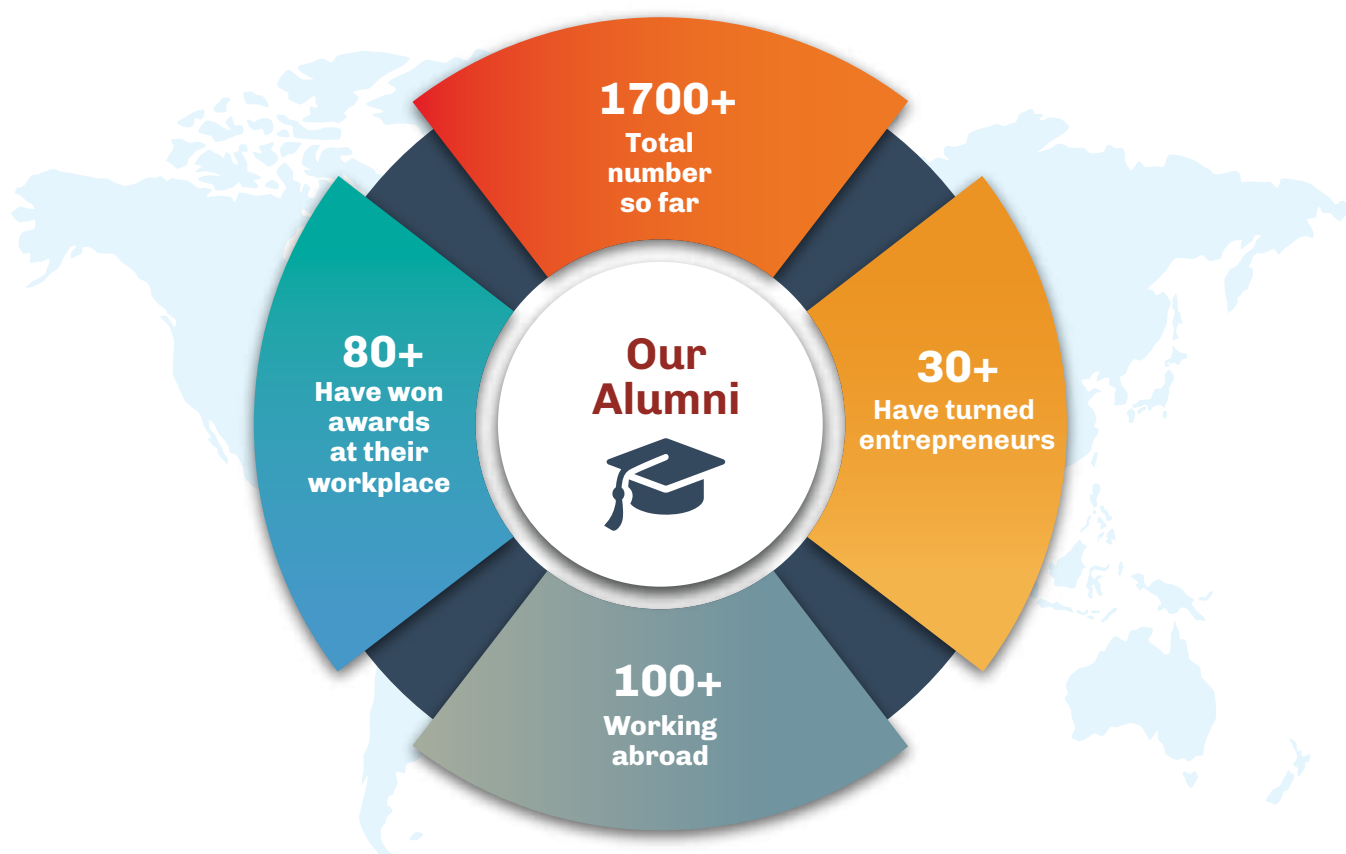


ISME has laid the strongest foundation on my career path by helping me to get placed in the top companies in the world. The dedicated faculty worked together as a family relentlessly to shape our future. Practical industrial scenarios, cultural activities, international exposure and a lot of other developmental programs have helped me identify my hidden talents and skills. My mentors helped me to carve the best path to achieve my goals.

Divya Elza Jacob
PGDM 2020-22, Grant Thornton

Alumni: Excelling in their careers

The name of ISME is being held high by its alumni, many of whom are charting successful careers within the country and abroad – whether it's in being a part of an organization in the position they are in, or in looking after the operations of their family-held business. The placement record of all alumni is available on the ISME webpage www.isme.in/placement-record.



Over 1700+ ISME Alumni working in Global Companies

Some of ISME Alumni working abroad

2007	Rajendra Khatri	Kuwait Finance House	Kuwait
2007	Devanshu Darmora	Nielsen	United Arab Emirates
2008	Abhilasha Gupta	TCS	United Kingdom
2008	Divya Chinwan	Essar Oil	Singapore
2008	Soma Jaiswal	Olam	Germany
2009	Shaheen Mumtaz	Mercedes Benz	United States of America
2009	Vinita Rastogi	Graydon	United Kingdom
2009	Vidhi Chauhan	HSBC Global Banking & Markets	Singapore
2009	Shweta Grover	Vic Roads	Australia
2009	Sushma Narayanaswamy	FS Asia Group	Singapore
2009	Nitin Navaratna	InMobi	Singapore
2009	Newton Raja	Emirates Business Machine LLC	United Arab Emirates
2009	Manpreet Kaur	Ernst & Young	United States of America
2009	Divya Srivastava	Scotia Bank	Canada
2010	Krishna Kumar MR	Transworld Logistics	United Arab Emirates
2010	Deepak Kumar	Imetris Corporation	United States of America
2010	Aditi Thakur	Suncorp Group	New Zealand
2010	Nirmit Gang	Kanoo Consulting Services	Bahrain
2010	Vivek Goyal	Serco	Hong Kong
2010	Vindhya Malviya	Pricewaterhouse Coopers	United States of America
2010	Ankit Srivastava	Wipro Promax Analytics Solutions	Australia
2010	Ranjeeta Sonal	OpsVed.Inc	United States of America
2010	Jayna Ambubhai Patel	SGGG Fund Servces Inc	Canada
2011	Ronald Fernandes	Capillary Technologies	United Arab Emirates
2011	Puja Devanand	Verizon Media Services	Canada
2011	Shruthi T	Quotient Technology	United States of America
2011	Smita Lakra	Picodi	Poland
2011	Renjini Rajan	Daimler Trucks	United States of America
2011	Praveen Bhaskar	Green Light Recruitment	New Zealand
2011	Pranav Kulkarni	Qatar Financial Centre	Qatar
2012	Husain Waris Kirmani	Sovereign Corporate Services	United Arab Emirates
2013	Garima Pal	Golder	Australia
2013	Sagar Arjun Baria	Emirates NBM	United Arab Emirates
2013	Seepica Singh	PayPoint plc	United Kingdom
2014	Vaishnavi Mishra	Miltenyi Biotech	United States of America
2016	Faizal Kallil	General Trading LLC	United Arab Emirates
2017	Katakam Jahnavi	AON	United States of America
2017	Pillai Akhil	Safaa Al Noor LLC Dubai	United Arab Emirates
2018	Neha Shindey	Trigent software	United States of America
2018	Salma Saghir Khan	Lubricants	Dubai

For more information visit <https://www.isme.in/placement-record/>

EXCELLENT PLACEMENTS (2022) IN TOP COMPANIES



AMRUTA Y
Karnataka
EY



ARIKATI
MAHENDRA SURYA
Andhra Pradesh
PAYTM



AYUSH SHARMA
Madhya Pradesh
CAPGEMINI



D CRUZ LUCITA
CELESTINE
Maharashtra
EY



DALAL ABBAS
HUSEENIBHA
Gujarat
EY



DIVYA ELZA
JACOB
Kerala
GRANT THORNTON



DOMMATI VAMSHI
KRISHNA
Telangana
QUESS CORP



DRISHYA DAS
Kerala
CSG



ISHITA NAIYA
West Bengal
**WALMART
LABS**



KARTHICK R
Karnataka
POSITION2



JKHUSBOO
SIROHIYA
West Bengal
GRANT THORNTON



KOONAL JAIN
Rajasthan
VIP INDUSTRIES



MEHTA JEEL CHETAN
Maharashtra
ONMOBILE



MOHAMMED
YOUSUF
GARTNER



PRATIBHA
Haryana
TURING



PREETI DEY
Jharkhand
STARAGILE



PRIYANKA
GAUTAM
Uttar Pradesh
CAPGEMINI



PRIYANSHI JAIN
Uttarkhand
WIPRO



RAJ SRIVASTAVA
Bihar
STARTEK



RITIK JAIN
Rajasthan
GRANT THORNTON



RITIKA PALLAVI
Jharkhand
MU SIGMA



SADDAM KHAMANI
Chhattisgarh
PAYTM



MAMIDI
ESWAR SAI
Andhra Pradesh
AMAZON



SAKSHI
THAKURANI
Andhra Pradesh
EY



SHASWAT
PRADHAN
Odisha
STARAGILE



SHOIAB
MUSHTAQ ANIM
J&K
ACCENTURE



SIRICHANDANA VV
Karnataka
EY



SUDHINDRA S
ORUGANTI
Telangana
FEDERAL BANK



SUKALLYAN
BISWAS
Kolkata
IDC



VANNALA LAVANYA
Hyderabad
GRANT THORNTON

And Many More...

STUDENTS OUTLOOK



Great exposure, comprehensive academic curriculum, uniform code of conduct at ISME. Creative and innovation activities are encouraged. Enhancement of skills and communication is promoted.

Radhika Chandramouli
BCom+ACCA 2022-25

The industry focused curriculum, engagement with senior industry leaders and faculty with International exposure has helped me enhance my knowledge. My stay in the comfortable and homely on campus hostel was full of fun and memories.

Kapil Shonak
PGDM 2021-23
Hector Beverages Pvt. Ltd (Paper Boat)



Welcome Home

As an ISME student, you will consider our well designed residential campus your home.

Cafeteria

The spacious campus has a cafeteria with a magnificent view of the amphitheatre. Apart from being a favourite hang-out for social interactions, the canteen provides homely, healthy and hygienic food.

Hostel & Sports Facilities

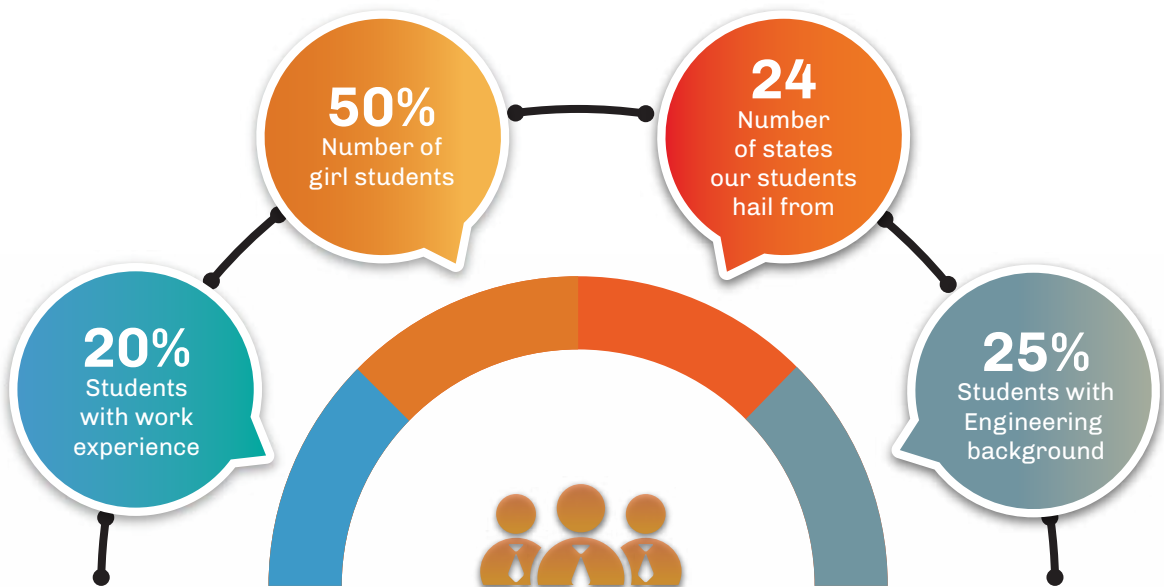
ISME has a modern on-campus hostel for boys and girls. It features an open-air amphitheatre, basketball and other sporting facilities with round-the-clock security. The entire hostel is Wi-Fi-enabled for uninterrupted learning environment outside the class.

Hot/Cold Water • Pollution-free atmosphere • North and South Indian veg food • 24/7 CCTV Monitoring • RO filtered drinking water • Spacious playground • Ragging-free campus • 24/7 security • Separate Recreational Room with TV • Volley Ball Court • Badminton Court • Basket Ball Court



STUDENT DIVERSITY

ISME is a home to many Indian and International students. Students from different parts of the country come to ISME to build their future. Life @ISME is a blend of many backgrounds and cultures. With the stage set for a constant exchange of customs and traditions, the air and mood is always of bonhomie, oneness and definitely fun.



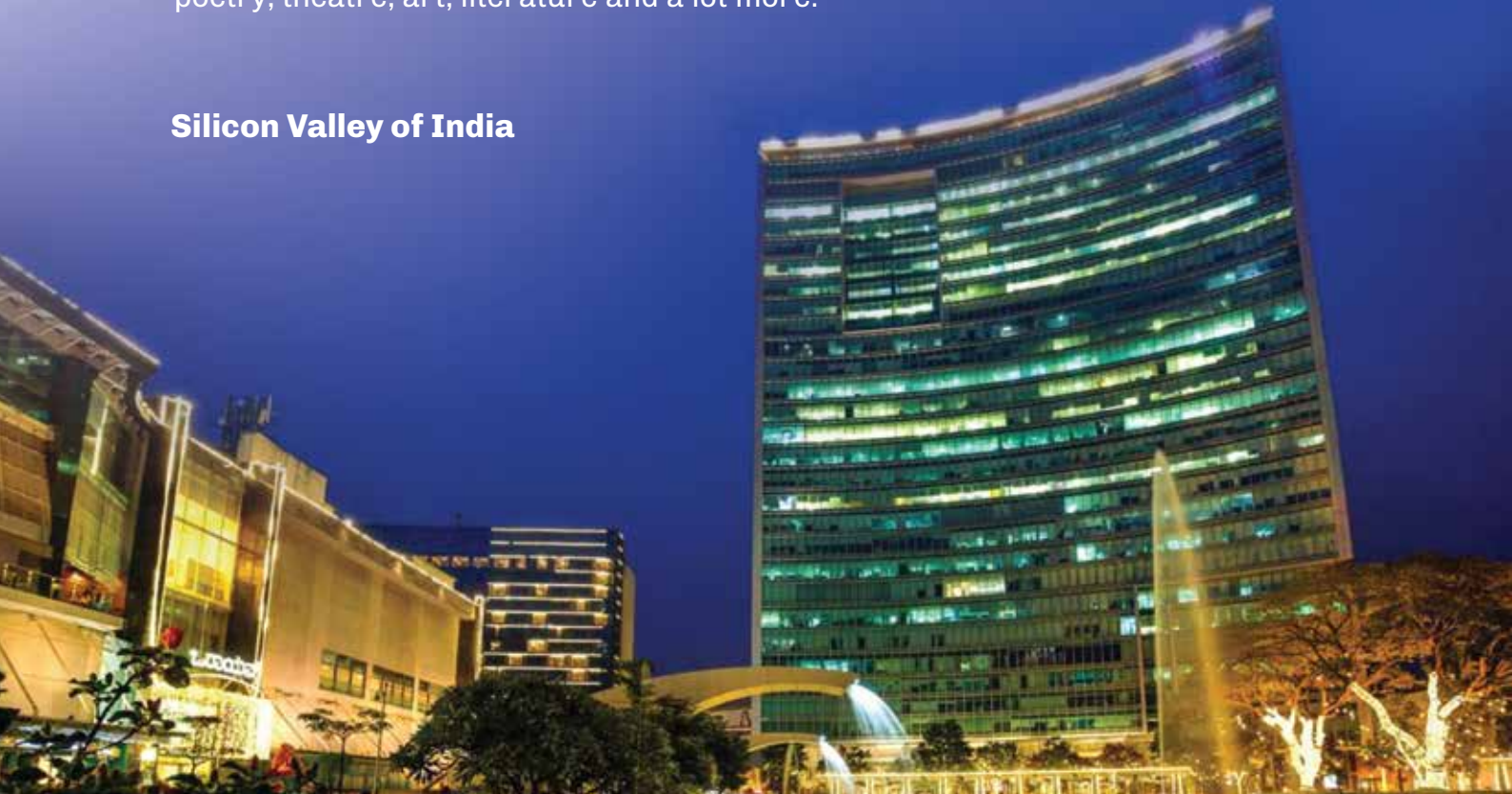
BANGALORE A MELTING POT OF IDEAS, THE HUB OF OPPORTUNITIES

There are many reasons that make Bangalore a city to flock to and attracts young and aspiring professionals from across the world.

Bangalore, also known as 'the Silicon Valley of India', 'the IT Hub of India', 'the Startup Capital of India', is always welcoming to anything that's innovative. It has made a place for itself in the 'top 10 preferred entrepreneurial destinations of the world' and has the highest job potential in India.

The climate of Bangalore is pleasant throughout the year and the city is a melting pot of cultures, lifestyles, cuisines and ideas that inspire progress. Bangalore is a fun place for youngsters with amazing spread of avenues to pursue interests like poetry, theatre, art, literature and a lot more.

Silicon Valley of India



Start up capital of India



**Pallavi Jain**

Director,
Admissions & International Relations
HRM, Wharton Business School, USA

**WELCOMING THOSE
WITH THE DESIRE
TO GO PLACES**

ISME takes great pride in admitting students from overseas and 24+ states of India every year. This diverse environment helps in nurturing and enriching students, who get individual attention as a result of our excellent faculty-student ratio. Well-designed curriculum and practical approach towards the courses boost the energy levels of the students. Students are transformed into smart, confident individuals ready to take on the challenges of the corporate world and succeed in life.

We look forward to meeting you and welcoming you to ISME.

PROGRAMS AND ELECTIVES

Campus:

International School of Management Excellence,
Sy. No. 88, Chembanahalli, Near Dommasandra
Circle, Sarjapur Road, Bangalore - 562 125,
Karnataka, India.

Corporate Office:

International School of Management Excellence,
CAP 1, EOIZ, Export Promotion Industrial Park,
Near ITPL, Whitefield, Bangalore - 560 066,
Karnataka, India.

WhatsApp: +91 8147693559

Phone: 88806 12345



Email: connect@isme.in
info@isme.in

Web: www.isme.in

Blog: isme.in/blogs/

Instagram: [activities.isme](https://www.instagram.com/activities.isme)

Facebook: [facebook.com/ismeexcel](https://www.facebook.com/ismeexcel)

Linkedin: <https://www.linkedin.com/school/ismebangalore>